

Thank you for your past support and consideration of a special gift to make Hosanna House possible for others like Christopher.



**FOR MORE INFORMATION
PLEASE CONTACT**

Jeff Levine at jlevine@lbrm.org.
LBRM Donations are accepted on the website, **lbrm.org**, and by mail to 1430 Pacific Ave., Long Beach, CA 90813. Tours led by Levine himself are available by calling 562-591-1292.



Scan the code for a direct link to donate!

OUR MISSION

Long Beach Rescue Mission is a place of healing and hope serving the greater Long Beach community by improving the quality of life of the hurting and homeless through loving and equipping them to be reconciled:
To God • To Self • To Family • To Society



lbrm.org

1430 Pacific Ave. | Long Beach, CA 90813 | 562-591-1292



*Name and photos may have been changed to protect privacy

You Can Make a Difference!

**THE HOSANNA HOUSE
SERVING HOMELESS INDIVIDUALS
WITH DISABILITIES**



WHY IS YOUR SUPPORT NEEDED?

The number of homeless in our community continues to grow. Your faithful support of Long Beach Rescue Mission has helped address many of their needs and lives have been changed because of you.

There is a segment of our homelessness population who has an additional challenge. These are homeless men with disabilities who need a special place to heal. The Hosanna House is that place.



How Our Dream Will Turn To A Reality!

Thankfully, LBRM owns a piece of property adjacent to our chapel and our Samaritan House (for men). We plan to turn this property into a 15 bed facility for men experiencing homelessness with physical disabilities.

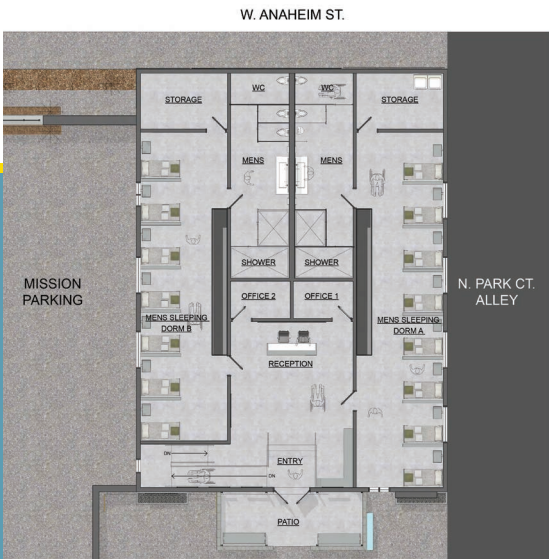
We were blessed to receive a gift from a generous donor to cover 3 years of operating costs for the Hosanna House.

LBRM has been blessed to have a foundation that will initially fund the project so we can commence with construction in May 2023.

Now, we are asking faithful donors to help us cover the \$2 million for construction, furnishings, etc.



Hosanna House is a 15 bed shelter for men with disabilities. When Samaritan House was built in the late 80's they didn't have the ADA requirements that exist today. We only have two beds that are available for men with disabilities, so this is a great need for our ministry so that we don't have to turn anyone away. Also 37% of the approximately 3,200 people experiencing homelessness in Long Beach have a physical disability, so this is a great need for our community. We are excited to expand our services to the most vulnerable of our community and look forward to bringing healing and hope to those in need.



HOW YOU CAN SUPPORT

NAMING OPPORTUNITIES	AMOUNT	# OF GIFTS	PLEDGE OPTIONS
House Partner	\$500,000	1	(4 year pledge of \$125,000)
Bedroom #1	\$250,000	1	(4 year pledge of \$62,500)
Bedroom #2	\$150,000	1	(4 year pledge of \$37,500)
Lobby	\$100,000	1	(4 year pledge of \$25,000)
Patio	\$100,000	1	(4 year pledge of \$25,000)
Bed Pods (\$425,000 total)	\$25,000	17	(2 year pledge of \$12,500)

MIRACLE FUNDERS

Canan	\$10,000	15	\$150,000 (2 year pledge of \$5,000)
Capernaum	\$5,000	10	\$50,000
Gennesaret	\$2,500	25	\$62,500
Bethsaida	\$1,000	50	\$50,000
Lazarus	\$500	75	\$37,500
Galilee	\$250	100	\$25,000

Total: 297 \$2,000,000

OPERATING COSTS

Operating Costs year 1	\$300,000 SECURED
Operating Costs year 2	\$300,000 PLEDGED
Operating Costs year 3	\$300,000 PLEDGED

Operating Total Costs: \$900,000

Note: all gifts over \$1,000 will be recognized on the honor wall plaque

